

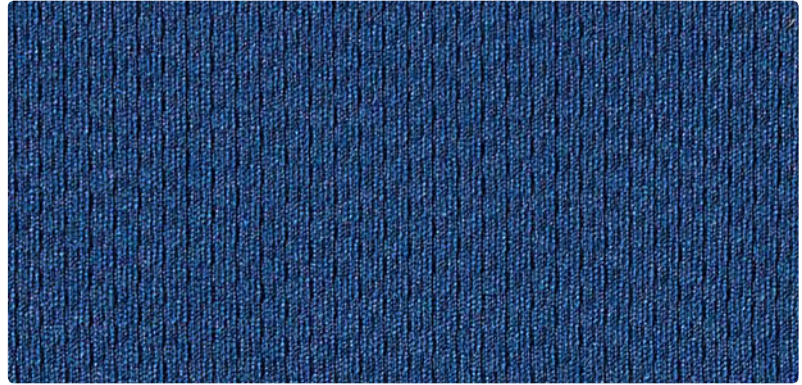


# Upholstery Seating

# MOONSCAPE STRETCH FABRIC



333-019  
Tangerine



333-014  
Cobalt



333-001  
Flame



333-023  
Grass



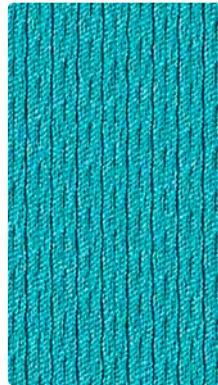
333-007  
Pumice



333-036  
Flint



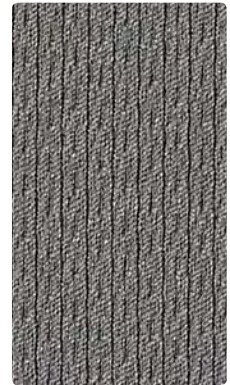
333-005  
Mulberry



333-024  
Teal



333-010  
Mocha



333-026  
Storm



333-011  
Ruby



333-004  
Indigo



333-000  
Bark



333-006  
Ebony



**Application**  
Upholstery Seating

**Content**  
100% Recycled Polyester

**Width**  
54 inches

**Abrasion** (Wyzenbeek/Cotton Duck)  
Passes 378,000 Double Rubs

**Finish**  
None

**Reduced Environmental Impact**  
GREENGUARD Gold Certified

**Eco-System**<sup>®</sup>  
Sustainable. Attainable at Mayer Fabrics.



**TECHNICAL INFORMATION**Content: **100% Repreve® Post-Consumer Recycled Polyester**

Width: 54"

Weight: 13.5 oz./linear yard

Backing: None

Finish: None

Approx. Repeat: .25" H, .25" V

Directional: Yes

Railroaded: No

**PERFORMANCE**Surface Abrasion: Heavy Duty ASTM D 3597/4157  
(Wyzenbeek/Cotton Duck)**Results**Passes 378,000 Double Rubs Multiple factors affect fabric durability and appearance retention, including end-user application and proper maintenance. Wyzenbeek results above 100,000 double rubs have not been shown to be a reliable indicator of increased fabric lifespan.

Pilling Resistance ASTM D 3511

Class 5

Colorfastness to Crocking AATCC 8

Dry: Class 4 min / Wet: Class 4 min

Colorfastness to Light AATCC 16

Class 4.5 at 40 hours

Stretchability ASTM 5034

Length 45% / Width 40%

Recovery AATCC-135, table 1, method 3

2% X 2%

**FLAMMABILITY**

California Technical Bulletin 117-2013

NFPA 260/UFAC Class 1

May comply with California Technical Bulletin 133 when combined with appropriate components.

**REDUCED ENVIRONMENTAL IMPACT****This product is GREENGUARD Gold Certified for low chemical and particle emissions to UL standard UL 2818 and may contribute to LEED certification. For complete information visit [mayerfabrics.com](http://mayerfabrics.com) and [UL.com/gg](http://UL.com/gg).**

The Eco-System icon indicates 100% recycled content.

**CLEANING INFORMATION**

WS: Water/Solvent Cleaner

**ADDITIONAL INFORMATION****Custom Capabilities:** All patterns can be custom colored. Minimum yardage applies.**Digital Swatch Card Color Matching:** Due to color variations on different monitors and color printers, actual swatch colors may vary slightly. Please request a memo sample from Mayer Fabrics to ensure proper color representation.**Specifications:** Specifications are correct at the time of printing. Current specifications are available on our website.This fabric meets or exceeds these ACT performance guidelines.  
\*Certification Marks owned by ACT\*

Moonscape is being offered as a Grade 4

