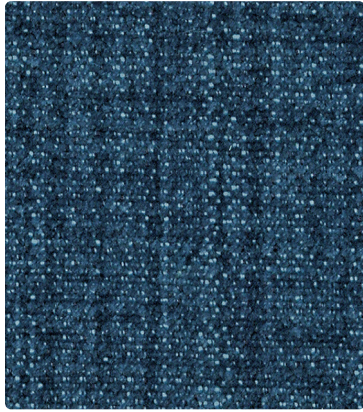
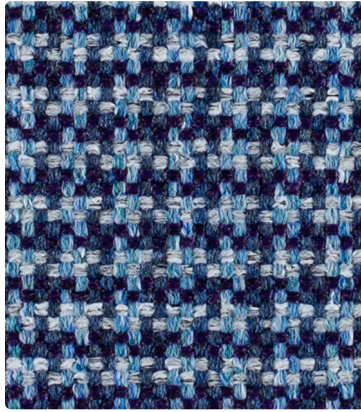


HAVEN



472-024 Ocean

SCOUT



470-024 Admiral

UTOPIA



473-024 Capri



472-007 Cocoon



472-027 Dove



470-006 Cloud



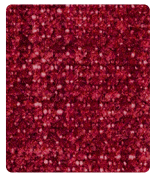
470-007 Flax



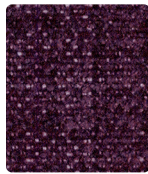
473-017 Oats



473-037 Fossil



472-011 Ruby



472-005 Eggplant



470-002 Brass



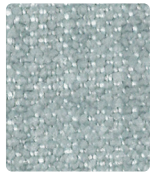
470-001 Campfire



473-009 Autumn



473-001 Flare



472-004 Powder



472-006 Shale



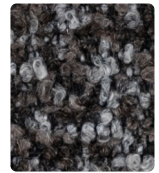
470-016 Steel



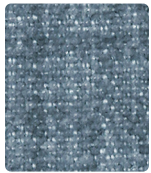
470-036 Carbon



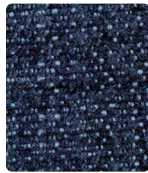
473-026 Smoke



473-046 Cinder



472-014 Iceberg



472-044 Navy



470-004 Sky



470-034 Anchor



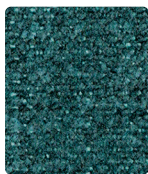
473-034 Rainstorm



473-004 Twilight



472-003 Seafoam



472-033 Peacock



470-014 Aegean



470-013 Everglade



473-003 Sprout



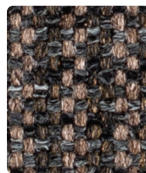
473-013 Spruce



472-010 Shiitake



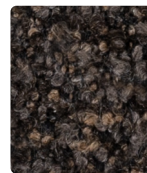
472-026 Iron



470-000 Earth



470-036 Charcoal



473-000 Sable



473-006 Obsidian

TECHNICAL INFORMATION

Supreen Coordinates | Interactive Card

Pattern 54"	Content and Backing	Certifications	Weight/ Linear Yd.	Pattern Repeat	Finish	Abrasion Wyzenbeek	Light- Fastness	Flammability	Cleaning Code
HAVEN <i>Directional</i>	92% Polyester, 6% Polyurethane, 2% Silicone Backing: Fluid Barrier (Supreen) Polyurethane	GREENGUARD Gold	22 oz.	Non- Matching	Supreen (Silicone) PFAS Free	100,000^ Double Rubs	40 hours	Cal. 117-2013 NFPA 260/UFAC Class 1	WS, BC
SCOUT <i>Directional</i>	91% Polyester, 7% Polyurethane, 2% Silicone Backing: Fluid Barrier (Supreen) Polyurethane	GREENGUARD Gold	17 oz.	0.275" H, 0.275" V	Supreen (Silicone) PFAS Free	100,000^ Double Rubs	40 hours	Cal. 117-2013 NFPA 260/UFAC Class 1	WS, BC
UTOPIA <i>Directional</i>	88% Polyester, 7% Acrylic, 3% Polyurethane, 2% Silicone Backing: Fluid Barrier (Supreen) Polyurethane	GREENGUARD Gold	24.5 oz.	None	Supreen (Silicone) PFAS Free	100,000^ Double Rubs	40 hours	Cal. 117-2013 NFPA 260/UFAC Class 1	WS, BC

REDUCED ENVIRONMENTAL IMPACT

These products are GREENGUARD Gold Certified for low chemical and particle emissions to UL standard UL 2818 and may contribute to LEED certification.

No FR Additive No Antibacterial/Antimicrobial Additives PFAS Free

CARE AND CLEANING INFORMATION

WS: Water/Solvent Cleaner

BC: Bleach Cleanable – 1 part bleach, 9 parts water = 10% bleach, 90% water solution. **Do not clean/disinfect fabric for longer than 10 minutes using the 10% bleach solution. Always rinse promptly with clean water after applying the bleach solution. Failure to do so will void any and all warranties.**

DYE TRANSFER DISCLAIMER

Certain clothing and accessory dyes (such as those used on denim jeans) may migrate to lighter colors. This phenomenon is increased by humidity and temperature and is irreversible. Mayer Fabrics will not assume responsibility for dye transfer caused by external contaminants. Please check compatibility when using this product in combination with painted or varnished surfaces.

ADDITIONAL INFORMATION

^Abrasion test results exceeding ACT Performance Guidelines are not an indicator of product lifespan. Multiple factors affect fabric durability and appearance retention.

Warranty: Please refer to the Mayer website for warranty information by pattern.

Custom Colors: All patterns can be custom colored. Minimum yardage applies.

Digital Swatch Card Color Matching: Due to color variations on different monitors and color printers, actual swatch colors may vary slightly. Please request a memo sample from Mayer Fabrics to ensure proper color representation.

Complete and current product information available at mayerfabrics.com.



These fabrics meet or exceed these ACT performance guidelines.
*Certification Marks owned by ACT®

©2024
SISUPCO MF0124



seating inc.

MAYER FABRICS